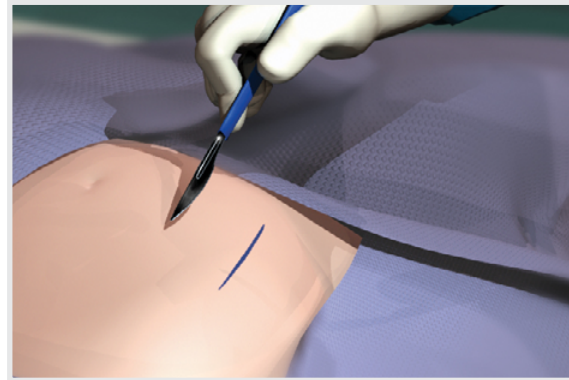


Alexis® O

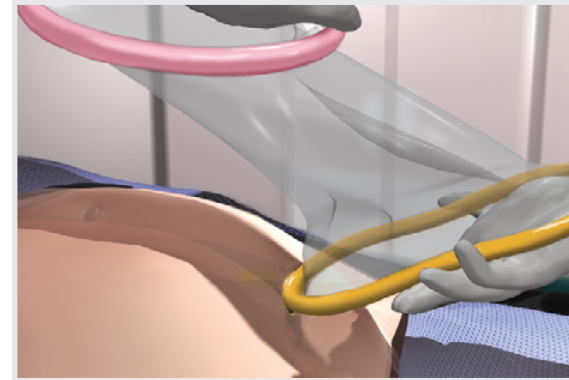
C-Section Protector-Retractor*

SETUP GUIDE

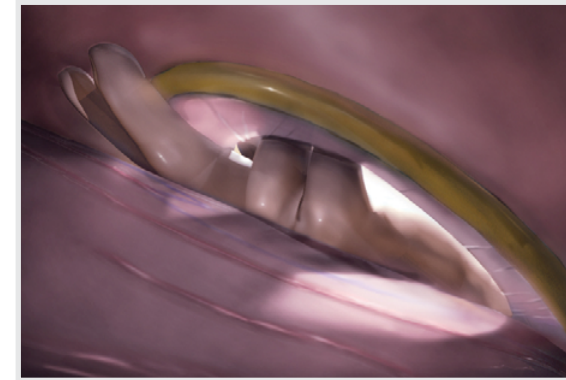
Prepare the surgical site according to standard procedure, making sure the skin is clean and dry.



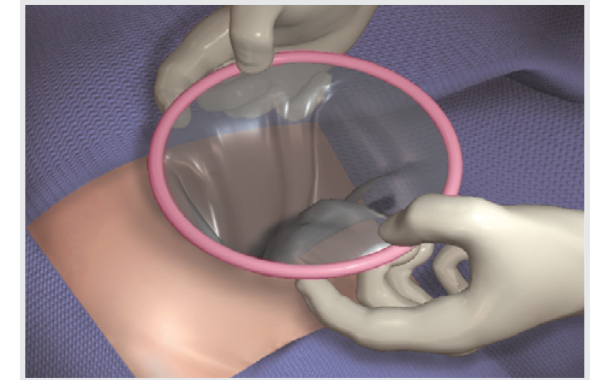
- 1 Make an abdominal incision along the marked incision line.



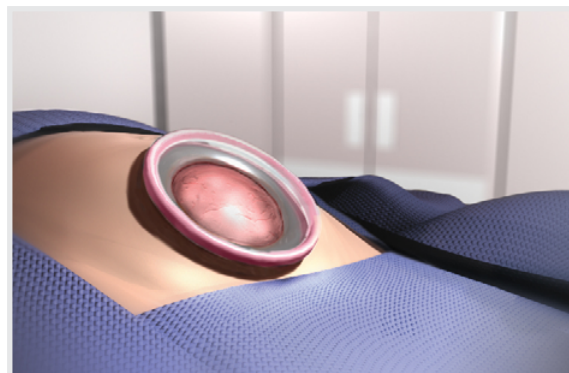
- 2 Insert the Alexis O C-section device's orange ring through the incision so that the lower portion is slightly superior to the pubic bone, between the abdominal wall and the bladder.



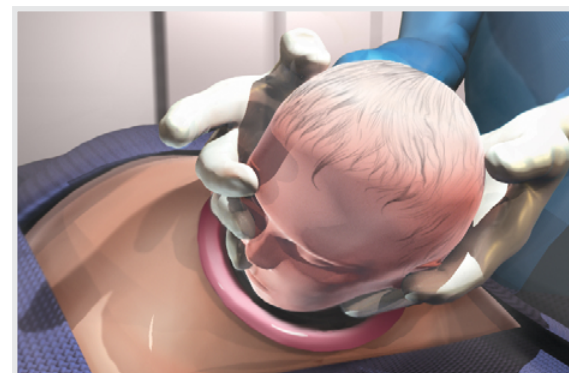
- 3 Carefully check to ensure that no bowel or tissue entrapment has occurred before retraction is initiated.



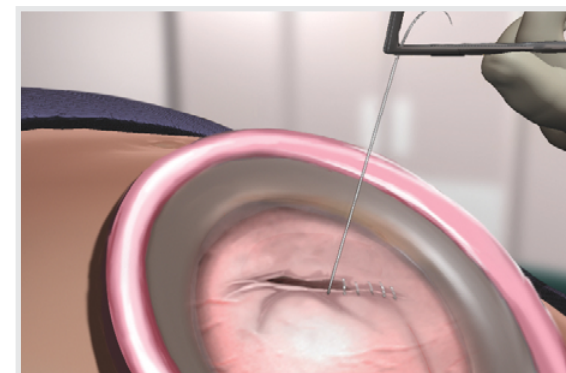
- 4 Gently grasp the pink retraction ring at 10 and 2 o'clock, and pull up until the orange ring sits tightly against the peritoneal layer. Roll the pink ring inward to achieve the desired retraction.



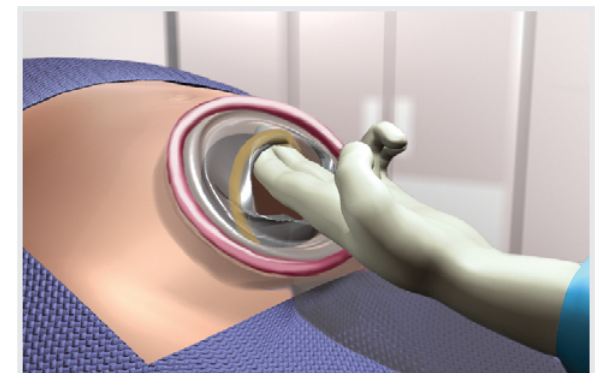
- 5 Double-check to ensure that no bowel or tissue entrapment has occurred. (See Figure 3.)



- 6 Perform the cesarean section through the retracted and protected incision site.



- 7 Perform the required internal stitching through the retracted incision site.



- 8 Retrieve the Alexis O C-section device by removing the orange ring from the peritoneal cavity.

*G6313 (Large) and G6314 (Extra Large) are indicated for use in nonurgent C-section delivery.

Visit [appliedmedical.com/alexis](https://www.appliedmedical.com/alexis) for more information.

Please contact your Applied Medical representative for more information on availability. This information is intended for dissemination exclusively to healthcare professionals and is not intended to replace labeling and Instructions for Use (IFU). Please refer to the IFU for the indications, contraindications, warnings, precautions, instructions and other information.

© 2021 Applied Medical Resources Corporation. All rights reserved. Applied Medical, the Applied Medical logo design, and marks designated with the symbol ® are trademarks of Applied Medical Resources Corporation, registered in one or more of the following countries: Australia, Canada, Japan, South Korea, the United States, the United Kingdom, and/or the European Union.

11/2021 413375-EN-EUR-A